



Uxbridge Public Schools Bus Transportation

QUICK START GUIDE

This guide does not replace the Walkers and Riders School Committee policy, but is meant to be a helpful starting point as you begin the process of registering your children for bus transportation.

1. Determine which of your children you wish to register for bus transportation. Remember, every child that you wish to have a seat on the bus **must** be registered. The only exception is:
 - If the child has “specialized transportation” listed in their IEP or 504 plan, as their transportation will be set up by the Special Education Department.
2. Determine if any of your children are subject to the transportation registration fee.
 - a. Use the flowcharts and the table on the following pages.
 - b. Make sure you use the flowchart that coincides with your child’s grade.
3. Bus Registration:
 - a. **On-line:** An online Bus Transportation Registration form and payment process is on the district website at: www.uxbridgeschools.com. This application must be completed by ALL students eligible for transportation who will be riding the bus next year school- (this includes free eligible students as well). For students who need to pay a transportation fee, please note your registration will not be considered complete until payment is made in full. No cash will be accepted.
 - b. **Registration and Q&A Workshops:** There will be two (2) registration and Q&A workshops for bus registration and payments. These workshops will take place at the Whitin Elementary School Library on: **May 30, 2017 at 6:00 p.m. and June 8 at 8:00 a.m.** You will be able to ask any questions about the transportation program at either of these two workshops and/or register and pay for bus transportation.

IMPORTANT: READ THE FREQUENTLY ASKED QUESTIONS THAT IS ATTACHED TO THIS GUIDE.

IS YOUR CHILD ELIGIBLE FOR BUSING OR ARE THEY A WALKER?

KINDERGARTEN – GRADES 5:

If your child is in this grade and resides 1 mile or less from your assigned school building, then your child is a walker and busing is not available. (If you do not fall under this category, then see the appropriate chart below to see if you are eligible for free busing)

GRADES 6-8:

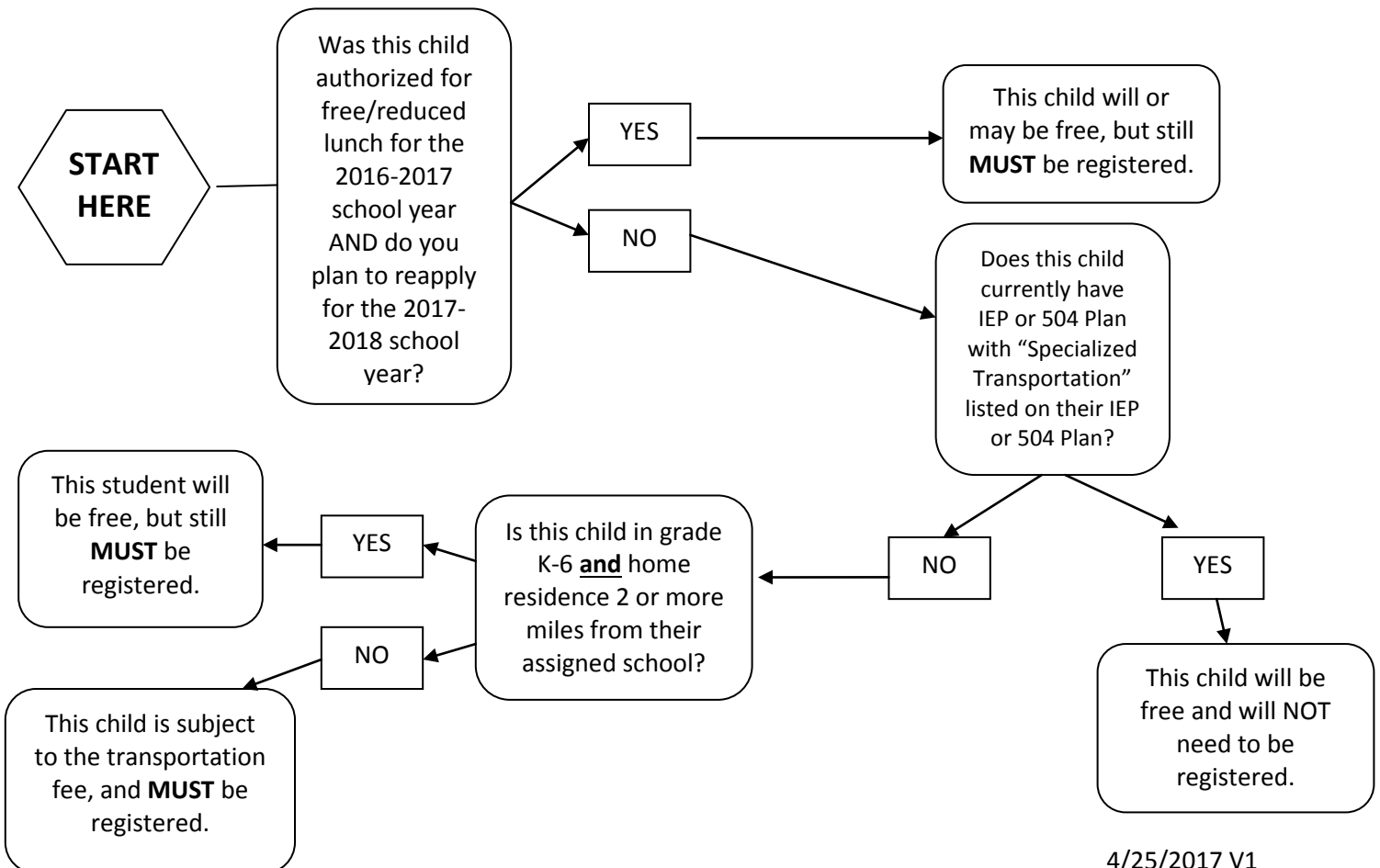
If your child is in this grade and resides 1.5 miles or less from your assigned school building, then your child is a walker and busing is not available. (If you do not fall under this category, then see the appropriate chart below to see if you are eligible for free busing)

GRADES 9-12:

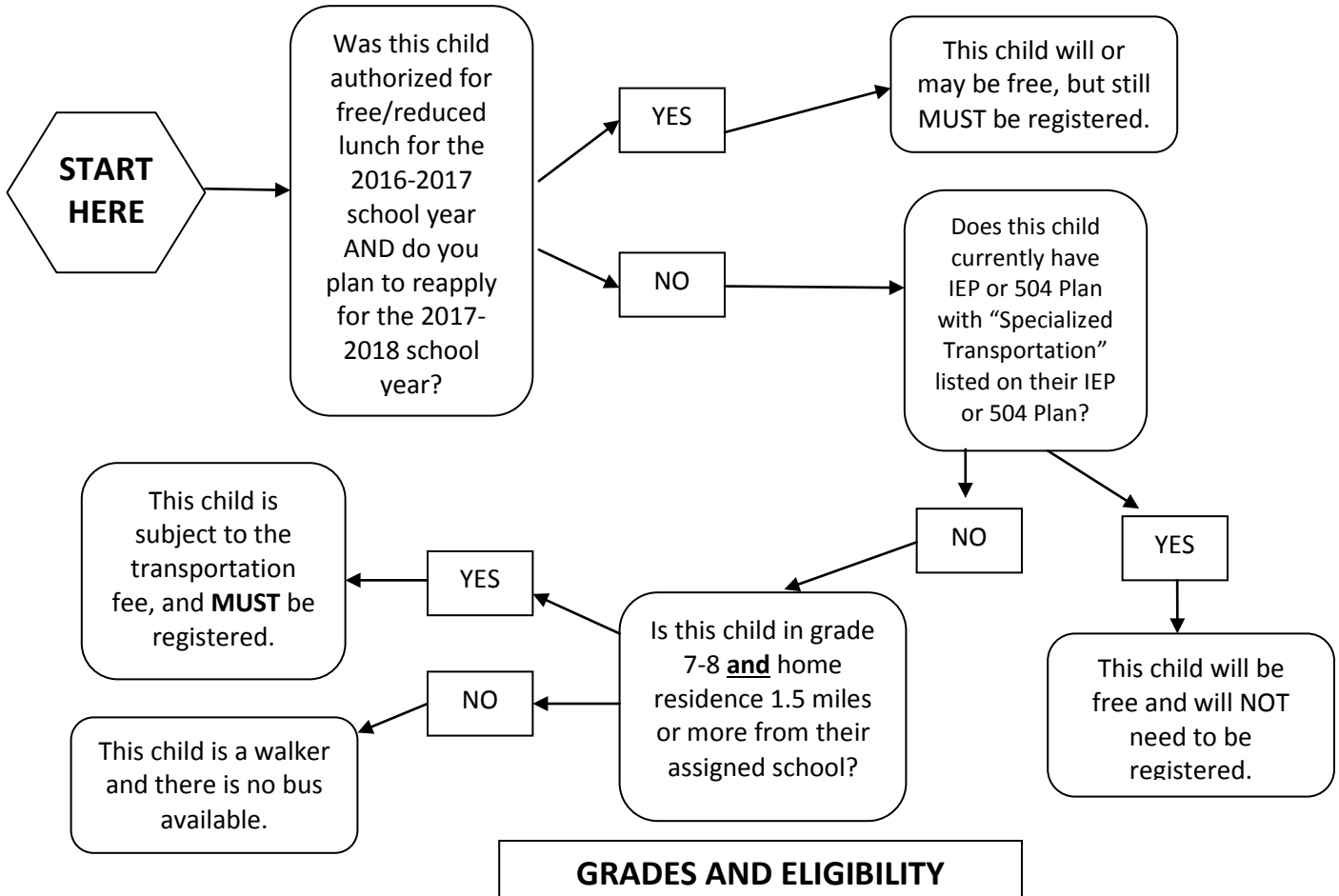
All students in grades 9-12 are eligible for busing. They must be registered and are subject to the transportation fee.

FOLLOW THE FLOW CHARTS BELOW IF YOU HAVE DETERMINED YOUR CHILD IS NOT A WALKER

GRADES K-6



GRADES 7-8



GRADES AND ELIGIBILITY

	WALKERS	FEES	FREE UNDER M.G.L.
Kindergarten	0-.99 miles	1-1.99 miles	>2 or more miles
Grade 1	0-.99 miles	1-1.99 miles	>2 or more miles
Grade 2	0-.99 miles	1-1.99 miles	>2 or more miles
Grade 3	0-.99 miles	1-1.99 miles	>2 or more miles
Grade 4	0-.99 miles	1-1.99 miles	>2 or more miles
Grade 5	0-.99 miles	1-1.99 miles	>2 or more miles
Grade 6	0-1.49 miles	1.5 - 1.99 miles	>2 or more miles
Grade 7	0-1.49 miles	1.5 > Miles	
Grade 8	0-1.49 miles	1.5 > Miles	
Grade 9	No Walkers	All	
Grade 10	No Walkers	All	
Grade 11	No Walkers	All	
Grade 12	No Walkers	All	